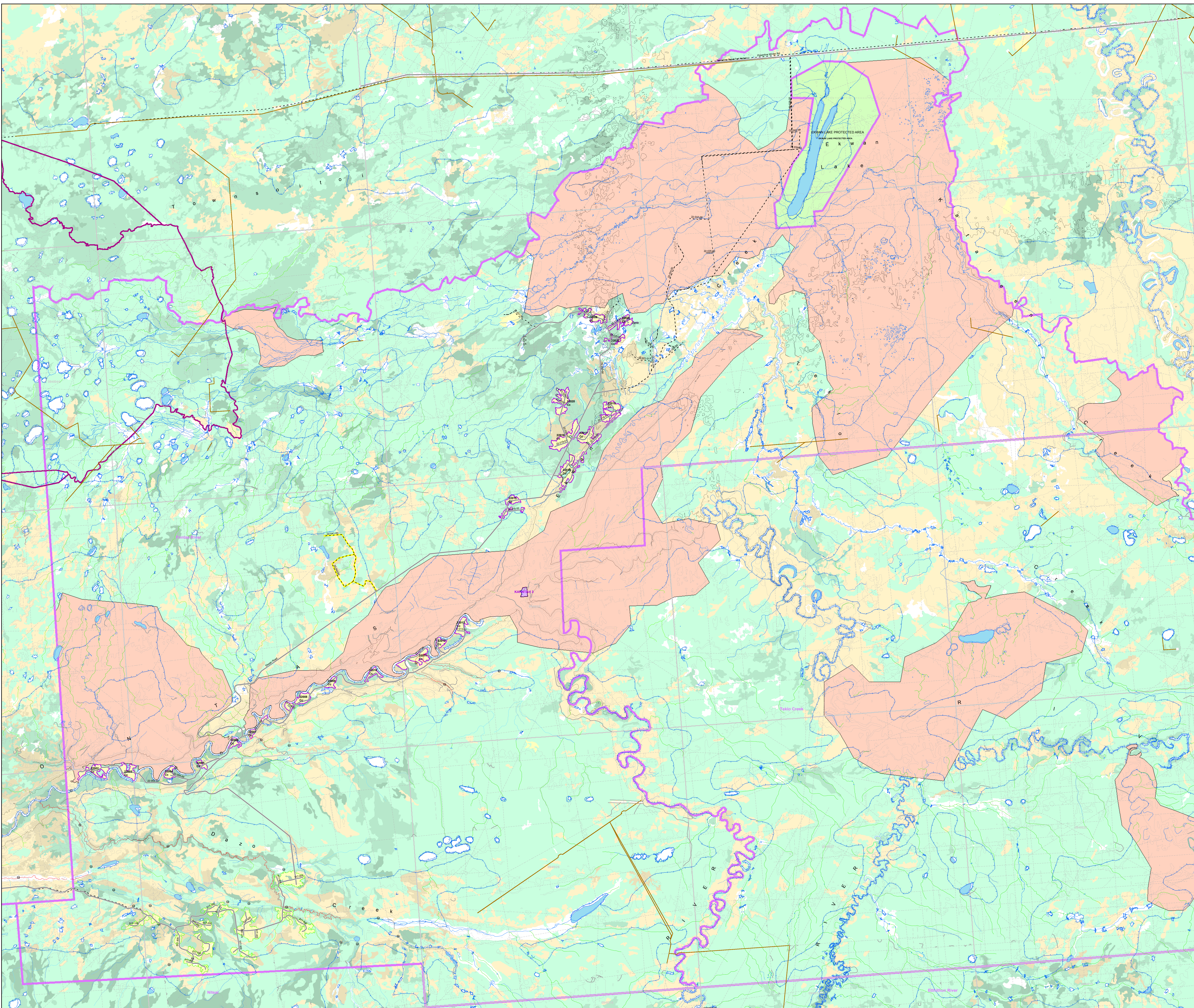
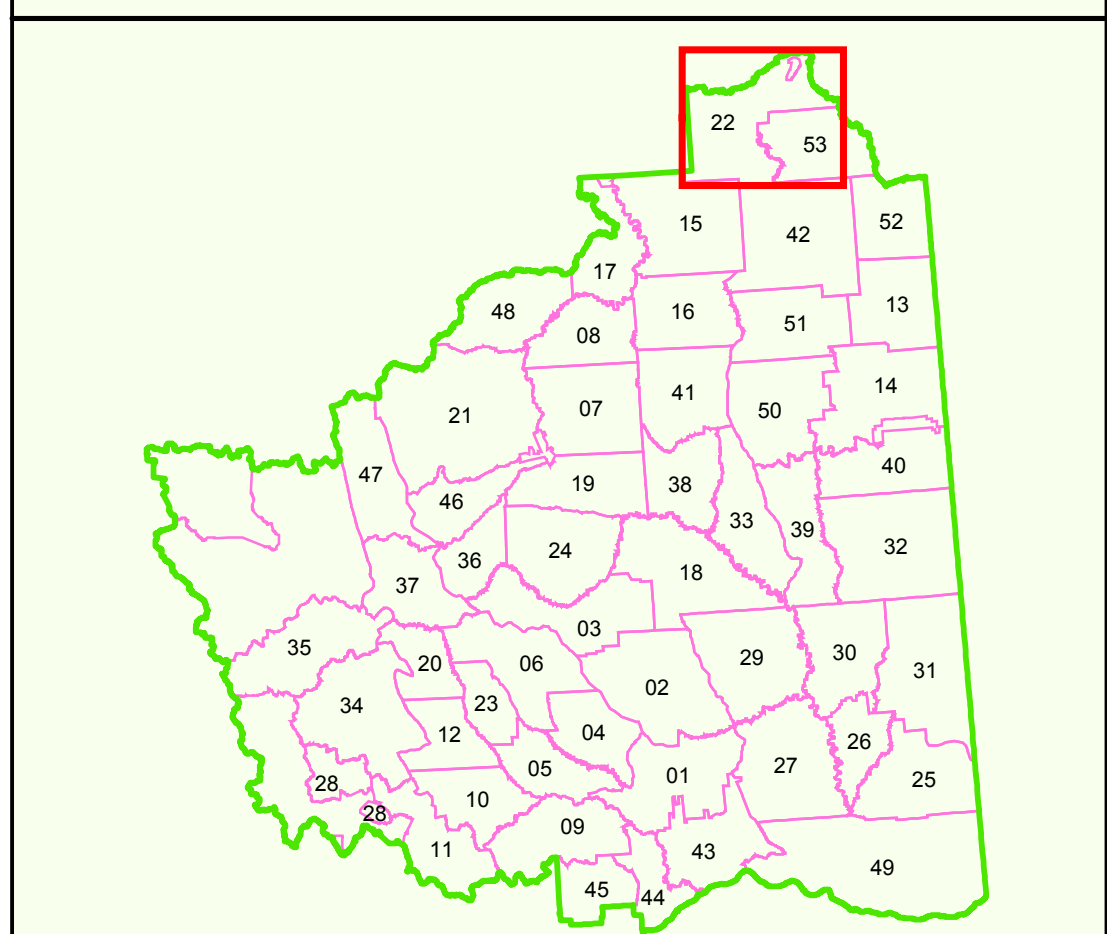


**2017 - 2023 CONSOLIDATED FOREST OPERATIONS SCHEDULE**  
 Current To: April 17, 2017  
**FORT ST. JOHN TIMBER SUPPLY AREA**  
**PEACE FOREST DISTRICT**

BC Timber Sales  
 Cameron River Logistics Inc.  
 Canadian Forest Products Ltd.  
 Dunne-Za Ventures LP  
 Louisiana-Pacific Canada  
 Mackenzie Pulp Mill Corporation a Paper Excellence Company  
 Peace Valley OSB

**Operating Area:**  
**# 22 - Fontas River**



**Map Legend**

<p><b>Cutblocks</b></p> <ul style="list-style-type: none"> <li> FOS Proposed (2017)</li> <li> FOS Proposed (Carryover)</li> <li> Authorized</li> <li> Harvested</li> <li> Free Growing</li> <li> Wildlife Tree Patch / Reserve</li> </ul> <p><b>Ownership Codes</b></p> <ul style="list-style-type: none"> <li>BC (BCIS (sooner))</li> <li>BCA (BCIS (sooner))</li> <li>BCB (BCIS (sooner or decedus))</li> <li>CC (Canfor (sooner))</li> <li>CS (Canfor (deciduous))</li> <li>CSL (Cameron River Logging)</li> <li>DZ (Dunne-Za Control)</li> <li>LP (Louisiana-Pacific Canada)</li> <li>MPAC (Mackenzie Pulp Mill Corporation a Paper Excellence Company)</li> <li>PV (Peace Valley OSB)</li> </ul> <p><b>Tembec PA13 Blocks</b></p> <ul style="list-style-type: none"> <li> Proposed Block</li> <li> Harvested</li> <li> Free Growing</li> </ul> <p><b>Transportation / Utilities</b></p> <ul style="list-style-type: none"> <li> Highways</li> <li> Existing Roads</li> <li> Proposed Roads</li> <li> FOS Proposed Roads (2017)</li> <li> Deactivated Roads</li> <li> TRM II Roads / Digital Road Atlas</li> <li> OGC Roads</li> <li> Pipeline</li> <li> Railway</li> <li> Electricity Transmission Line</li> <li> Seismic Line</li> </ul> <p><b>Road Structures</b></p> <ul style="list-style-type: none"> <li> Gate</li> <li> Bridge</li> <li> Cattle Guard</li> </ul> <p><b>Hydrography</b></p> <ul style="list-style-type: none"> <li> Lakes, Rivers</li> <li> Wetlands</li> <li> Definite Stream</li> <li> Indefinite Stream</li> <li> Non-Fish, Query</li> <li> Non-Fish, Inventory</li> <li> Fish, Inventory</li> <li> Riparian Classification</li> </ul>	<p><b>Administrative</b></p> <ul style="list-style-type: none"> <li> BCGS Mapsheets</li> <li> Operating Area Boundaries</li> <li> Woodlot License Areas</li> <li> Private</li> <li> First Nations Reserve</li> <li> First Nations Claim Area</li> <li> Ecological Reserve, Park, Protected Areas</li> <li> Muskwa Kechika Boundary</li> <li> FOS Old Forest Management Area</li> <li> IRP Alpine Zone</li> <li> IRP Riparian Zone</li> <li> Major River Corridors</li> <li> Range Tenures</li> <li> Ungulate Winter Range</li> <li> Wildlife Habitat Area</li> <li> Scenic Areas</li> </ul> <p><b>Visual Quality Objective Codes:</b></p> <ul style="list-style-type: none"> <li>P Preservation</li> <li>R Retention</li> <li>PR Partial Retention</li> <li>M Modification</li> <li>MM Maximum Modification</li> </ul> <p><b>Contours</b></p> <ul style="list-style-type: none"> <li> Index Contour</li> <li> Intermediate Contour</li> <li> Cliff</li> </ul> <p><b>Recreation</b></p> <ul style="list-style-type: none"> <li> Recreation Site</li> <li> Recreation Trail</li> <li> Recreation Reserves / Sites</li> </ul> <p><b>Seral Stage Theming</b></p> <ul style="list-style-type: none"> <li> &lt; 40 Coniferous / Deciduous</li> <li> 40 - 100 Coniferous</li> <li> 101 - 140 Coniferous</li> <li> 141+ Coniferous</li> <li> 40 - 100 Deciduous</li> <li> 101+ Deciduous</li> <li> Water</li> </ul>
--	---

0 0.75 1.5 2.25 3 Kilometers  
**1:50,000**

Projection: Albers  
 False Easting: 1000000.000000  
 False Northing: 1000000.000000  
 Standard Parallel 1: 50.000000  
 Standard Parallel 2: 50.000000  
 Latitude Of Origin: 49.000000  
 Central Meridian: 120.000000  
 Units: Meter

Datum: North American Datum 1983 (NAD83)  
 Digital base map derived from TRM II  
 Contours derived from Digital Elevation Model (DEM)  
 Digital datasets maintained and updated by Canfor.

Map date: 29 September 2017  
 Map produced by: Verburggen, Kim  
 Map template used: FOS\_Map\_Template\_Final\_Map.mxd